



Mountain View College

DALLAS COUNTY COMMUNITY COLLEGE DISTRICT

Mountain View College Service Area

Population Statistics Report

October 2007

MVC Office of Research and Planning

**Mountain View College Service Area
Population Statistics
October 2007**

Table of Contents

	Page
Introduction:	
General Population Description	1
Differences in MVC Service Area Neighborhoods	1
General Geographic Description	2
MVC Service Area Boundary General Description	2
MVC Service Area Boundary Detail Street Description.....	2
High Schools Located Within the MVC Service Area.....	3
Major Employers Located Within the MVC Service Area.....	3
Major Employers Located in Close Proximity to the MVC Service Area	3
MVC Service Area Map.....	4
1900, 2000, and 2004 Trends in General MVC Service Area Population – Charts:	
Total Population by City	5
Total Population by Percent Ethnicity	5
Percentage of College Graduates by City.....	6
Percentage not High School Graduates by City.....	6
Number of Households by City	7
Median Household Income by City	7
1900, 2000, and 2004 Trends in General MVC Service Area Total Population Statistics Total and City Specific – Tables:	
Age Groups and Gender	8
Educational Attainment and Ethnicity.....	9
Household Income Groups, Median and Average Household Income	10
2004 Population Estimate - MVC Service Area Zip Code Specific – Charts:	
Ethnicity Percentages by Zip Code	11
Percentage Educational Attainment by Zip Code	12
Household Median Income by Zip Code	13
2004 Population Estimate - MVC Service Area Zip Code Specific – Tables:	
Age Groups, Gender, Educational Attainment, Ethnicity, Household Income.....	14-16
Census 2000- MVC Service Area Zip Code Specific – Tables:	
Age Groups, Gender, Educational Attainment, Ethnicity, Household Income.....	17-19
Census 1990 - MVC Service Area Zip Code Specific – Tables:	
Age Groups, Gender, Educational Attainment, Ethnicity, Household Income.....	20-22
City of Dallas, Zip Code Specific, Color-Coded Maps:	
Source: <i>Analyze Dallas</i> web site: http://analyzedallas.org/AnalyzeDallas/Default.aspx	
<i>“Foundation for Community Empowerment” Maps</i>	
Percentage of Population Aged 25 and Over, Less than a 9 th Grade Ed: 2000.....	23
Percentage of Population Aged 25 and Over,: Bac. Degree or Higher: 2000.....	24
Percentage of Total Tax Returns Reporting Income Under \$10,000: 2001	25
Percentage of Total Tax Returns Reporting Income \$10,000 - \$25,000: 2001.....	26
Percentage of Population Aged 16 Years and Older Not In Labor Force: 2000	27
Number of Juvenile Referrals: 2002-2003	28

**Mountain View College Service Area
Population Statistics
October 2007**

Introduction:

The Mountain View College service area 1990 and 2000 population statistics were compiled using data sets from the US Census Bureau. The 2004 MVC service area population estimate was compiled from "Microsoft MapPoint 2004" and the following web sites Analyze Dallas, City of Cedar Hill, City of Duncanville, and City of Grand Prairie.

General Population Description:

The 2000 US Census recorded a total population of 438,855 persons for the Mountain View College service area. A 2004 population estimate states that of the Mountain View College service area has grown to a total population of 521,712 persons. The 2004 ethnic composition is 44% Hispanic, 31% African-American, 21% White, and 3% Other. Forty-one percent of the population's households earn less than \$35,000 annually, and the median household income is \$44,528. Of adults 25 years of age and older, 20% have a college degree, 21% have some college and no degree, 26% have a high school diploma, and 33% did not graduate from high school. **(See Charts pages 5-7 and Tables pages 8-10)**

Differences in MVC Service Area Neighborhoods:

While the overall population statistics of the MVC Service Area portray much ethnic diversity, there are considerable differences in the social and economic indicators between the individual communities that we serve.

The city of Dallas neighborhood, (Zip Code 75211) where Mountain View College is located, is 84% Hispanic. Only 9% of the adult population has a college degree and 57% have not graduated from high school. Forty-eight percent of the households earn less than \$35,000 and the median household income is just \$36,307. Zip Code 75212, immediately to the north, is 67% Hispanic and 30% African-American and has even lower economic and educational attainment indicators. Zip Codes 75208, 75224, and 75216, just to the east, have similarly very low educational attainment rates and median household incomes.

Contrast the city of Dallas older inner city Oak Cliff neighborhoods, in the immediate vicinity of MVC, to the newer predominantly middle class suburban neighborhoods of south Grand Prairie (Zip Code 75052), extreme southwest Dallas (Zip Code 75249), south Duncanville (Zip Code 75137), and Cedar Hill (Zip Code 75104). The ethnicities of these neighborhoods are a relatively equal mix of White, African-American, and Hispanic residents with median household incomes ranging from \$58,000-\$66,000. Additionally, 33%-40% of these residents have college degrees and 10%-15% do not have a high school diploma.

(See Charts pages 11-13, Tables pages 14-16, Maps pages 23-28)

**Mountain View College Service Area
Population Statistics
October 2007**

Introduction (continued):

General Geographic Description:

The Mountain View College service area encompasses the southwestern part of Dallas County where the northernmost part of the Texas Hill Country meets the Great Plains. The area consists of the cities of Cedar Hill, Dallas, Duncanville, and Grand Prairie. From the northwest corner, the service area includes:

- the southern two thirds of the city of Grand Prairie, which accounts for 21% of the service area's population;
- the southwestern portion of the city of Dallas, including most of the area known as Oak Cliff (63% of the service area's population);
- all of the city of Duncanville (8% of the service area's population);
- and the southwestern two thirds of the city of Cedar Hill (8% of the service area's population).

MVC Service Area Boundary General Description:

The western boundary is the Dallas/Tarrant County Line and the southern boundary is the Dallas/Ellis County Line. From the northwest corner in Grand Prairie, the northern boundary goes due east, just south of I-30. The boundary turns north one mile before Loop 12 and turns east at the Trinity River. At Westmoreland Rd, the boundary turns south and follows a stair-step path through Oak Cliff to the southeast, and proceeds around the southern part of the Kessler Park community to I-35E. It follows I-35E south, turns east on Illinois Ave where it follows another stair-step path to the southeast one block east of the Veterans Medical Center and then turns south on Sunnyvale St. The boundary turns back to the west on E. Ledbetter Dr (Loop 12), and turns southwest on Highway 67 all the way to the Dallas/Ellis County Line in Cedar Hill.

MVC Service Area Boundary Detail Street Description:

From the northwest corner of the service area at the Dallas/Tarrant County line in Grand Prairie: Go due east on Main Street/Jefferson St; north on a line that crosses I-30 one mile west of Loop 12 and intersects the west end of Singleton Blvd; east at the Trinity River; south on Westmoreland Rd; east on I-30; south on Hampton Rd; east on Davis St; south on Edgefield Ave; east on Jefferson St; south on S. Tyler St; east on the DART railroad tracks; south on I35E/Highway 67; east on Illinois Ave; south on S. Marsalis Ave; east on E. Hobson Ave; south on S. Ewing Ave; east on E. Saner Ave; south on S. Lancaster Rd; northeast on Stovall Dr; southeast on Sunnyvale St; west on E. Ledbetter Dr (Loop 12); and southwest on Highway 67 to the Dallas/Ellis County Line.

(See MVC Service Area Map page 4)

**Mountain View College Service Area
Population Statistics
October 2007**

Introduction (continued):

High Schools Located Within the MVC Service Area:

Bishop Dunne Catholic High School
Cedar Hill High School
Dallas Independent School District:
 Moises Molina High School
 Sunset High School
 Justin F. Kimball High School
 South Oak Cliff High School
 Mountain View College Early College High School
Duncanville High School
Grand Prairie Independent School District
 Grand Prairie High School
 Grand Prairie South High School

Major Employers Located Within the MVC Service Area:

Vought Aircraft Industries	Public entities including:
AAFES (Army and Air Force Exchange Service)	Mountain View College
VA Medial Center	Cedar Hill ISD
Renaissance Hospital of Dallas	Dallas ISD
Dallas Executive Airport	Duncanville ISD
Super Wal-Mart and Super Target stores	Grand Prairie ISD
Dillard's, JC Penney, and Sears department stores	City of Cedar Hill
Lowe's Home Improvement	City of Dallas
Various warehouse and freight transportation companies	City of Duncanville
Various grocery stores	City of Grand Prairie
Various restaurants	Dallas County

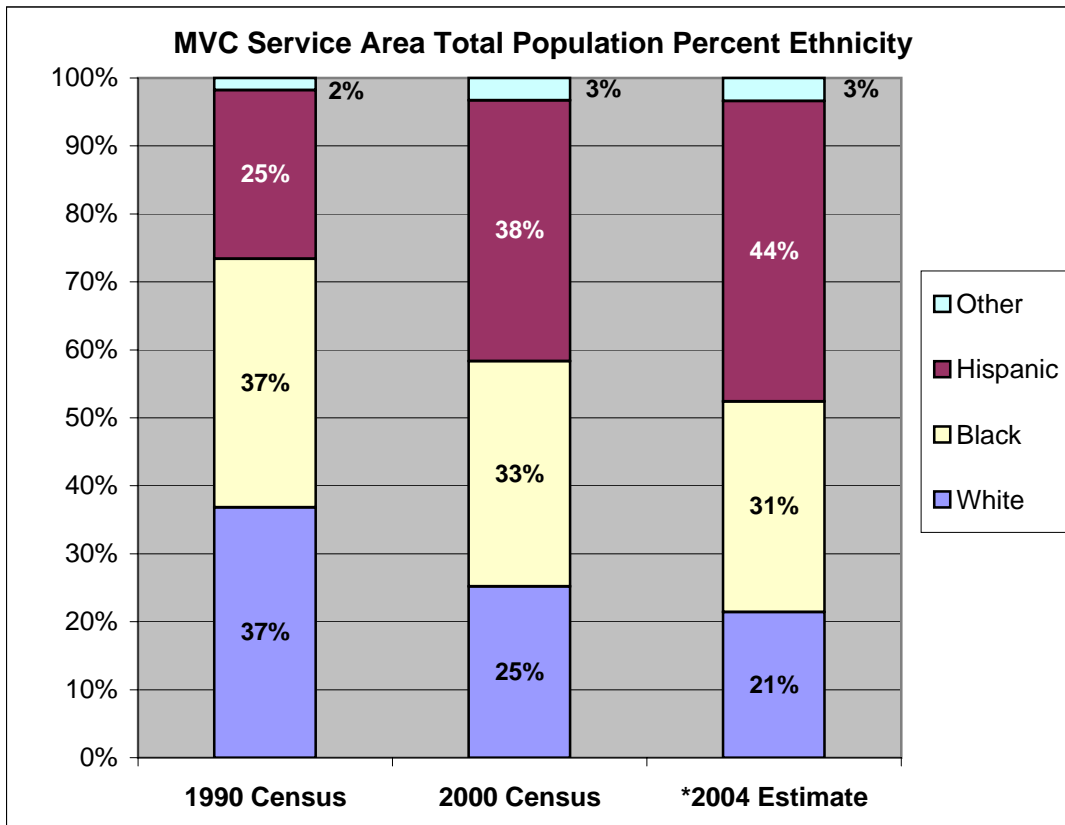
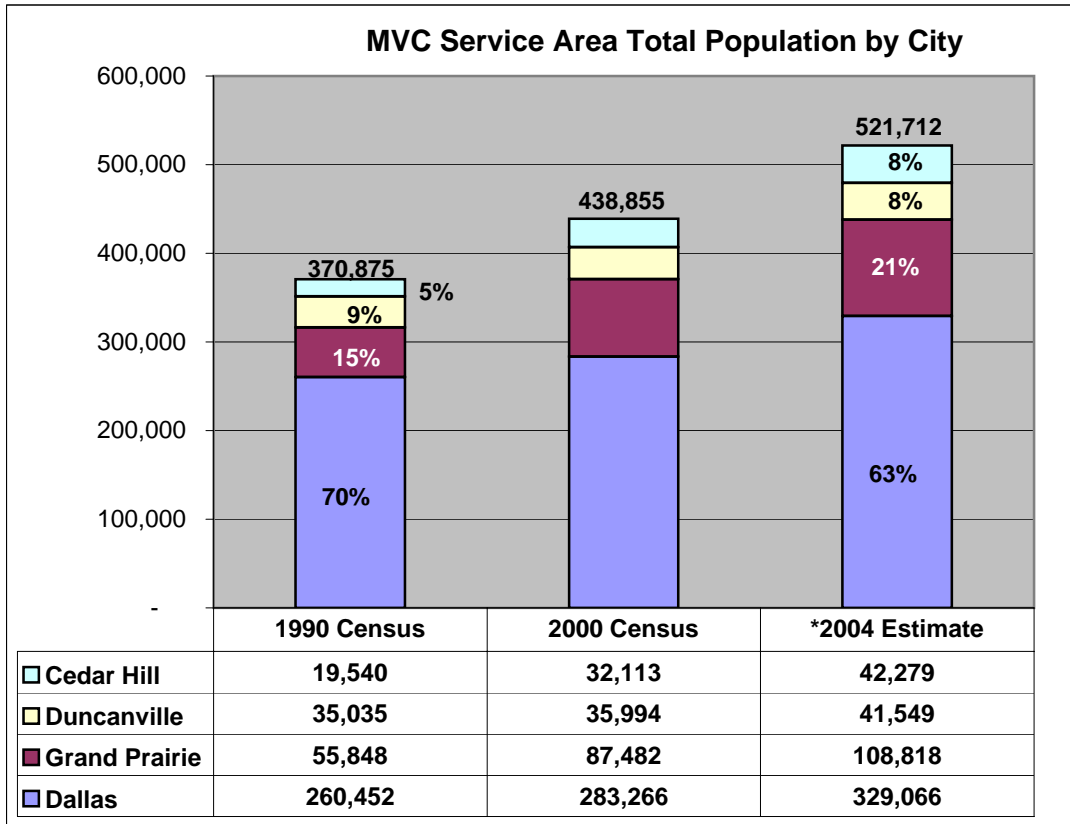
Major Employers Located in Close Proximity to the MVC Service Area:

Lockheed Martin Aeronautics Co.	Texas Health Resources
Texas Instruments Inc.	Baylor Healthcare System
DFW AirPort	Children's Medical Center Dallas
Love Field	HCA Hospital Corp. of America
AMR Corp. (American & American Eagle Airlines)	Methodist Health System
Southwest Airlines	TXU Corp.
Brinker International (Operates Restaurant Chains)	United Parcel Service
Centex Corp. (Home building)	FedEx Corp.
AT&T	Blockbuster Inc. (National HQ)
Verizon Communications	Frito-Lay Inc.
Sprint Nextel Corp.	General Motors Corp.
Perot Systems Corp. (Technology Consulting)	
International Business Machines (Information Technology)	

Source: *City of Dallas Office of Economic Development web site: "Top 50 Employers 2006"*
http://www.bigd-ed.org/data_iedc.html

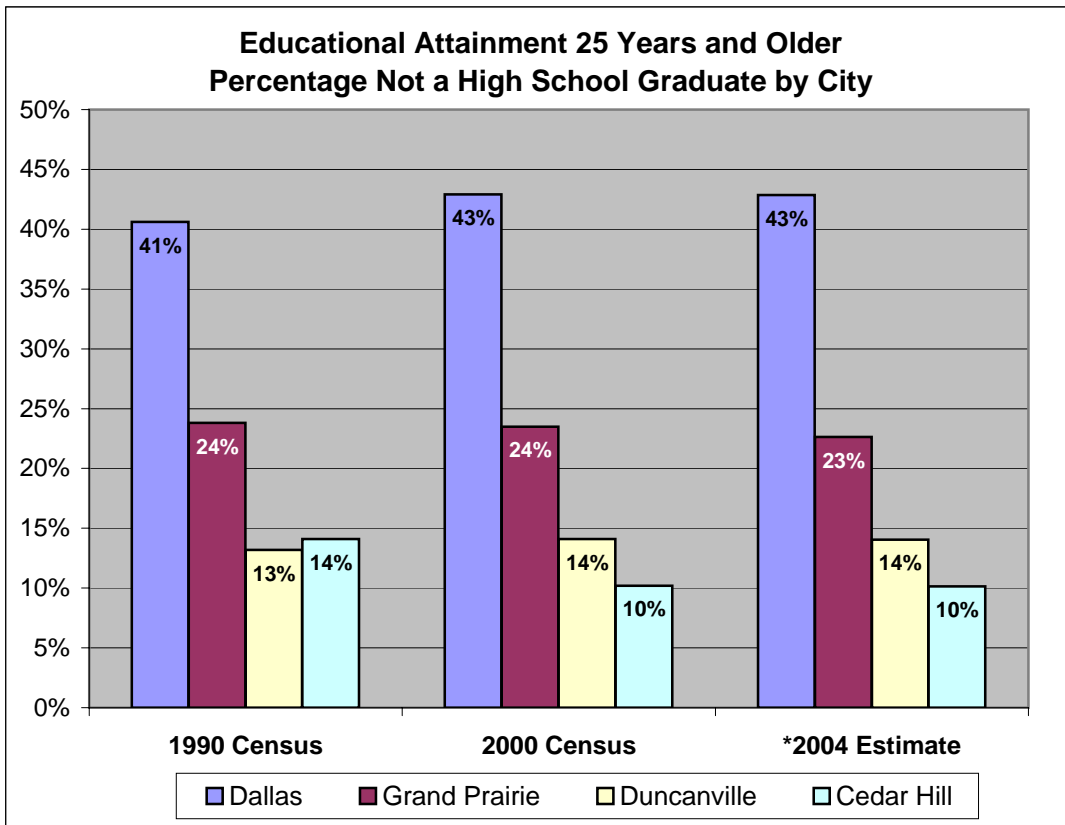
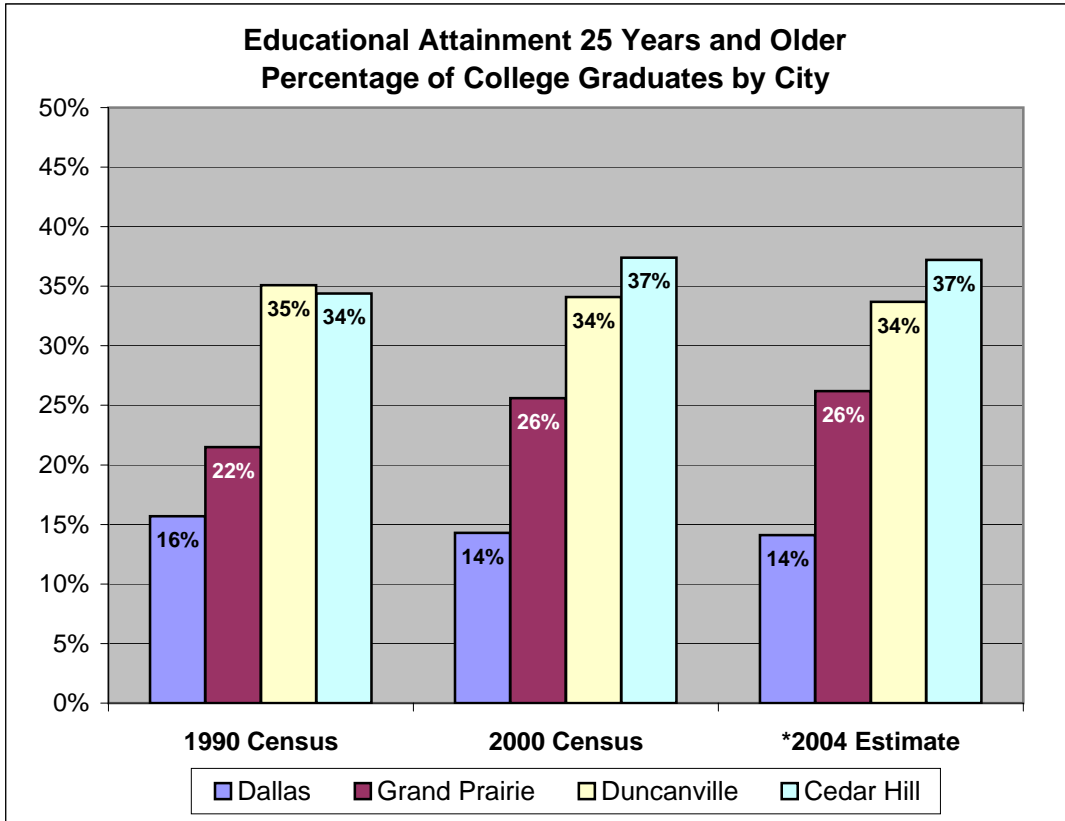
MVC Service Area Map Removed to reduce file size. Access map page via separate link made available beneath the main report link.

Mountain View College Service Area General Trends in Population Statistics



Dallas and Grand Prairie numbers include only ZIP Codes within the MVC service area.

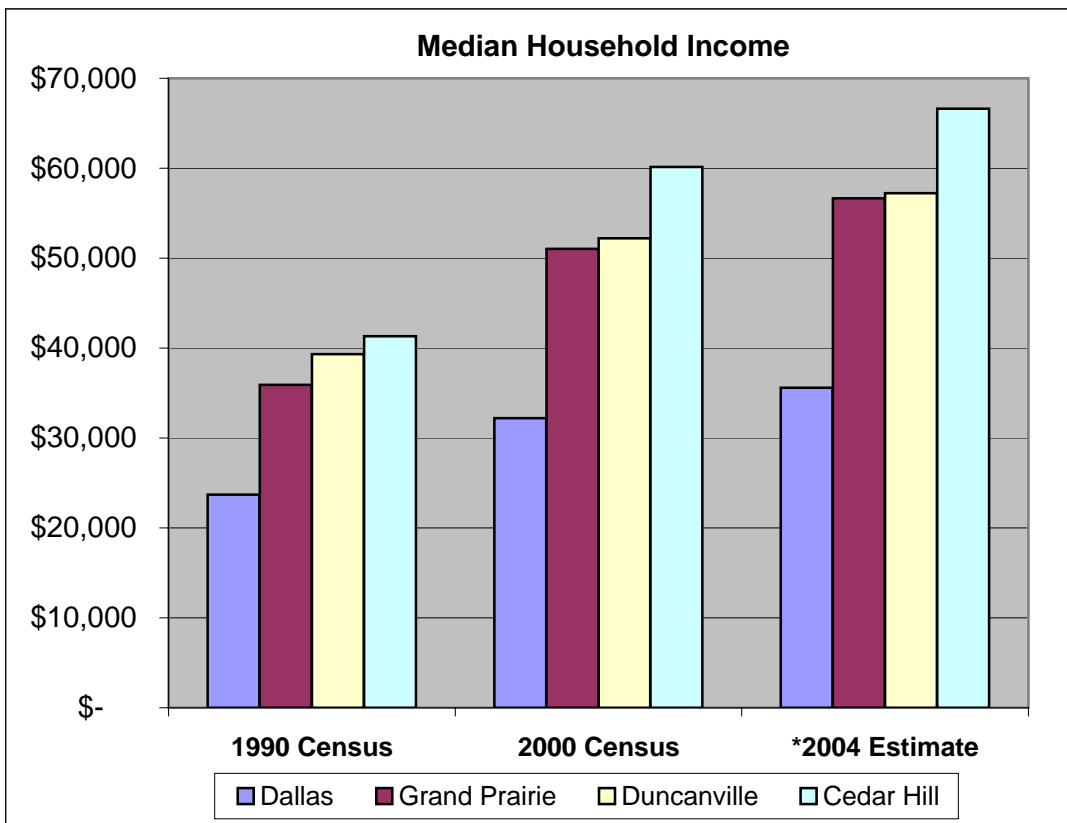
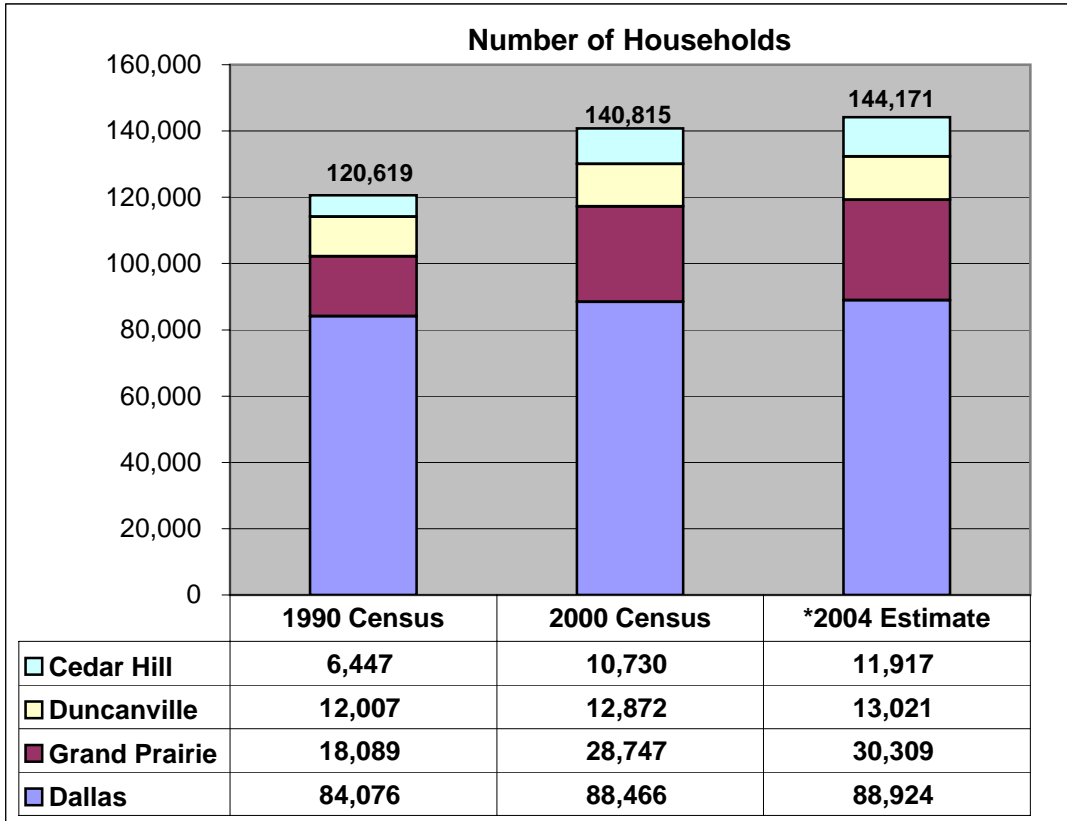
Mountain View College Service Area General Trends in Population Statistics



Dallas and Grand Prairie numbers include only ZIP Codes within the MVC service area.

*2004 Estimate Source: Microsoft MapPoint 2004, City web sites

Mountain View College Service Area General Trends in Population Statistics



Dallas and Grand Prairie numbers include only ZIP Codes within the MVC service area.

*2004 Estimate Source: Microsoft MapPoint 2004, City web sites

**Mountain View College Service Area
General Population Demographic Trends
1990, 2000, 2004**

Year	MVC Service Area City	Total Population		AGE							GENDER	
		Number	Percentage	0 - 17	18 - 24	25 - 34	35 - 44	45 - 54	55 - 64	65 +	Female	Male
2004 Popula- tion *Estimate	Cedar Hill	42,279	8.1%	26.5%	7.7%	27.1%	16.0%	12.6%	6.1%	3.9%	52.3%	47.7%
	Duncanville	41,549	8.0%	23.6%	8.4%	22.9%	12.5%	14.0%	9.9%	8.7%	52.7%	47.3%
	Grand Prairie	108,818	20.9%	27.1%	8.0%	27.3%	14.7%	11.4%	6.5%	4.9%	51.0%	49.0%
	Dallas	329,066	63.1%	28.0%	10.3%	26.0%	12.2%	10.1%	6.5%	7.0%	50.8%	49.2%
	Service Area Total	521,712	100%	27.3%	9.5%	26.1%	13.0%	10.9%	6.7%	6.5%	51.1%	48.9%
2000 US Census	Cedar Hill	32,113	7.3%	32.2%	7.5%	15.1%	21.6%	13.4%	5.9%	4.2%	52.3%	47.7%
	Duncanville	35,994	8.2%	28.2%	8.2%	12.4%	16.2%	15.4%	9.6%	9.9%	53.2%	46.8%
	Grand Prairie	87,482	19.9%	32.1%	9.1%	16.1%	18.4%	12.5%	6.2%	5.6%	51.4%	48.6%
	Dallas	283,266	64.5%	32.3%	12.3%	15.4%	14.3%	11.2%	6.6%	8.0%	51.0%	49.0%
	Service Area Total	438,855	100%	31.9%	11.0%	15.3%	15.8%	12.0%	6.7%	7.4%	51.4%	48.6%
1990 US Census	Cedar Hill	19,540	5.3%	33.3%	7.6%	24.5%	18.3%	8.0%	4.0%	4.4%	50.9%	49.1%
	Duncanville	35,035	9.4%	29.8%	8.7%	15.4%	18.7%	13.1%	7.6%	6.8%	51.3%	48.7%
	Grand Prairie	55,848	15.1%	31.8%	9.7%	19.4%	18.3%	9.3%	5.7%	5.7%	50.4%	49.6%
	Dallas	260,452	70.2%	31.8%	11.6%	18.0%	14.0%	9.0%	6.7%	9.0%	51.4%	48.6%
	Service Area Total	370,875	100%	31.7%	10.8%	18.3%	15.3%	9.4%	6.5%	8.1%	51.2%	48.8%

Source: 1990 and 2000 Statistics from US Census Bureau Data Sets.

*2004 Estimate from Microsoft MapPoint 2004 and City web sites.

Mountain View College Service Area General Population Demographic Trends 1990, 2000, 2004

Year	MVC Service Area City	Total Population		Total Population Age 25+ Years	EDUCATIONAL ATTAINMENT 25 Years and older				ETHNICITY			
		Number	Percentage		College Degree or more	Some College No Degree	High School Graduate or Equivalent	Less than High School Graduate	White	Black	Hispanic	Other
2004 Population *Estimate	Cedar Hill	42,279	8.1%	27,788	37.2%	29.0%	23.7%	10.1%	50.0%	33.8%	12.4%	3.9%
	Duncanville	41,549	8.0%	28,269	33.7%	27.2%	25.1%	14.1%	48.6%	26.7%	19.9%	4.8%
	Grand Prairie	108,818	20.9%	70,557	26.2%	24.7%	26.4%	22.6%	36.5%	14.4%	41.5%	7.7%
	Dallas	329,066	63.1%	202,971	14.1%	17.4%	25.7%	42.9%	9.1%	35.7%	53.5%	1.6%
	Service Area Total	521,712	100%	329,585	20.3%	20.8%	25.6%	33.3%	21.4%	31.0%	44.2%	3.4%
2000 US Census	Cedar Hill	32,113	7.3%	19,357	37.4%	28.8%	23.6%	10.2%	51.0%	33.8%	11.4%	3.8%
	Duncanville	35,994	8.2%	22,869	34.1%	26.8%	24.9%	14.1%	55.8%	24.8%	14.7%	4.7%
	Grand Prairie	87,482	19.9%	51,444	25.6%	24.4%	26.6%	23.5%	46.0%	15.7%	30.8%	7.5%
	Dallas	283,266	64.5%	157,067	14.3%	17.2%	25.5%	42.9%	11.9%	39.5%	46.8%	1.7%
	Service Area Total	438,855	100%	250,737	20.4%	20.6%	25.7%	33.3%	25.2%	33.2%	38.4%	3.3%
1999 US Census	Cedar Hill	19,540	5.3%	11,564	34.4%	28.3%	23.2%	14.1%	76.2%	14.1%	7.7%	2.0%
	Duncanville	35,035	9.4%	21,564	35.1%	26.3%	25.4%	13.2%	80.3%	10.8%	6.8%	2.1%
	Grand Prairie	55,848	15.1%	32,623	21.5%	24.2%	30.5%	23.8%	66.9%	9.7%	20.0%	3.4%
	Dallas	260,452	70.2%	147,582	15.7%	17.2%	26.5%	40.6%	21.5%	47.5%	29.5%	1.4%
	Service Area Total	370,875	100%	213,333	19.6%	19.8%	26.8%	33.9%	36.8%	36.6%	24.8%	1.8%

Source: 1990 and 2000 Statistics from US Census Bureau Data Sets.

*2004 Estimate from Microsoft MapPoint 2004 and City web sites.

Mountain View College Service Area General Population Demographic Trends 1990, 2000, 2004

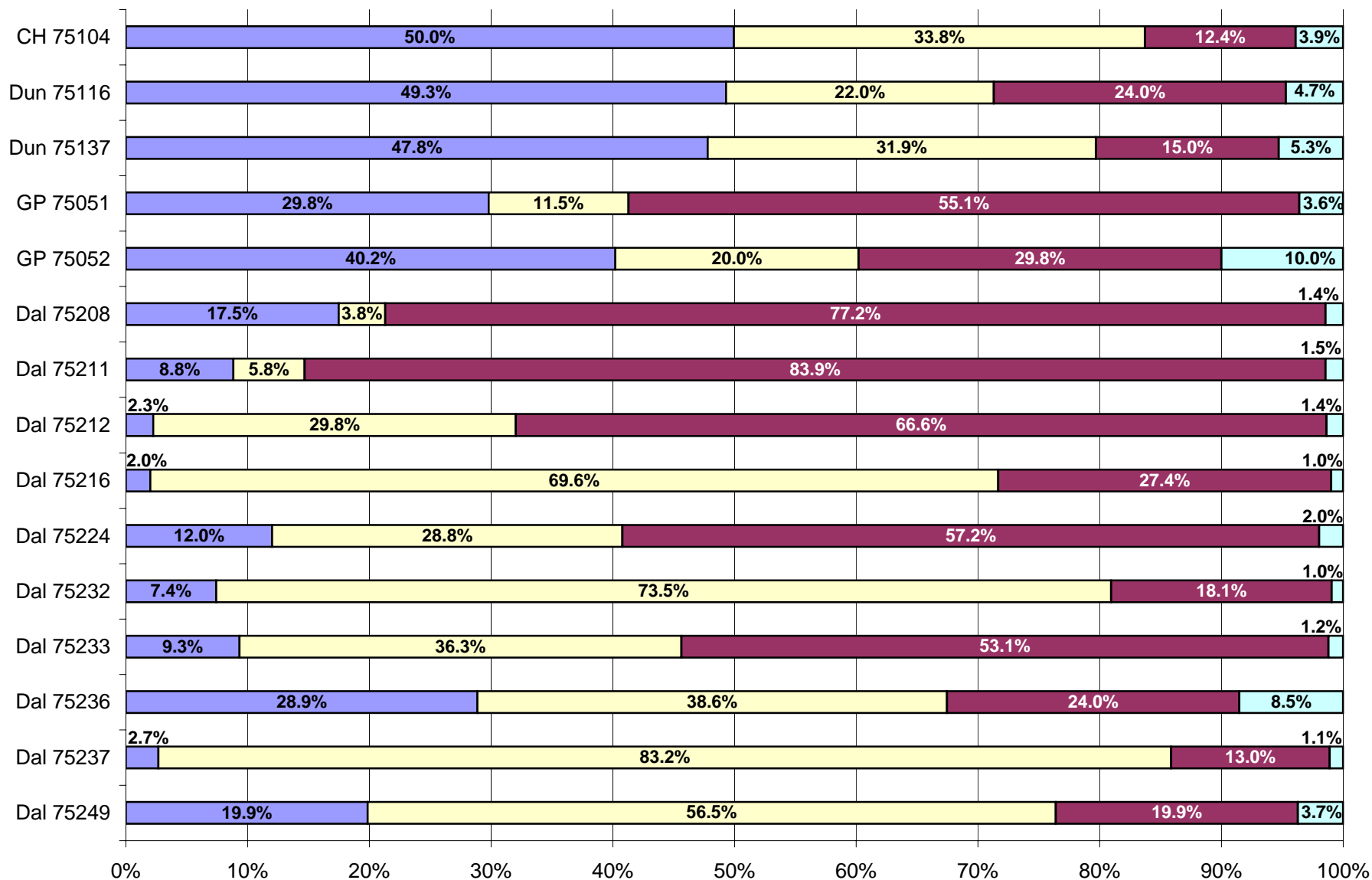
Year	MVC Service Area City	Total Population		Total Households	HOUSEHOLD INCOME							
		Number	Percentage		Under \$35,000	\$35,000+	\$50,000+	\$75,000+	\$100,000 +	\$150,000 +	Median Household Income	Average Household Income
2004 Population *Estimate	Cedar Hill	42,279	8.1%	11,917	17.8%	82.2%	66.9%	41.5%	22.6%	5.7%	\$66,617	\$76,640
	Duncanville	41,549	8.0%	13,021	26.0%	74.0%	56.2%	34.1%	19.3%	5.6%	\$57,213	\$69,671
	Grand Prairie	108,818	20.9%	30,309	28.1%	71.9%	55.9%	32.8%	16.9%	4.2%	\$56,654	\$64,940
	Dallas	329,066	63.1%	88,924	50.5%	49.5%	31.8%	15.0%	7.3%	2.2%	\$35,577	\$44,846
	Service Area Total	521,712	100%	144,171	40.9%	59.1%	42.0%	22.6%	11.7%	3.2%	\$44,528	\$53,940
2000 US Census	Cedar Hill	32,113	7.3%	10,730	21.4%	78.6%	61.6%	34.5%	16.2%	4.6%	\$60,140	\$69,187
	Duncanville	35,994	8.2%	12,872	29.9%	70.1%	52.5%	29.7%	15.2%	4.6%	\$52,202	\$63,706
	Grand Prairie	87,482	19.9%	28,747	31.9%	68.1%	50.4%	26.2%	11.4%	2.8%	\$51,015	\$57,417
	Dallas	283,266	64.5%	88,466	54.6%	45.4%	28.2%	12.1%	5.5%	1.8%	\$32,191	\$41,682
	Service Area Total	438,855	100%	140,815	45.2%	54.8%	37.5%	18.3%	8.4%	2.5%	\$39,993	\$49,004
1999 US Census	Cedar Hill	19,540	5.3%	6,447	39.4%	60.6%	37.1%	10.2%	4.0%	1.1%	\$41,305	\$45,533
	Duncanville	35,035	9.4%	12,007	39.8%	60.2%	39.1%	16.1%	5.7%	1.9%	\$39,316	\$43,939
	Grand Prairie	55,848	15.1%	18,089	48.1%	51.9%	27.2%	6.9%	1.7%	0.6%	\$35,891	\$38,826
	Dallas	260,452	70.2%	84,076	70.4%	29.6%	13.9%	3.8%	1.5%	0.4%	\$23,707	\$28,989
	Service Area Total	370,875	100%	120,619	62.4%	37.6%	19.6%	5.8%	2.1%	0.6%	\$28,326	\$33,411

Source: 1990 and 2000 Statistics from US Census Bureau Data Sets.

*2004 Estimate from Microsoft MapPoint 2004 and City web sites.

Mountain View College Service Area Population Estimate* 2004 Ethnicity Percentages by Zip Code

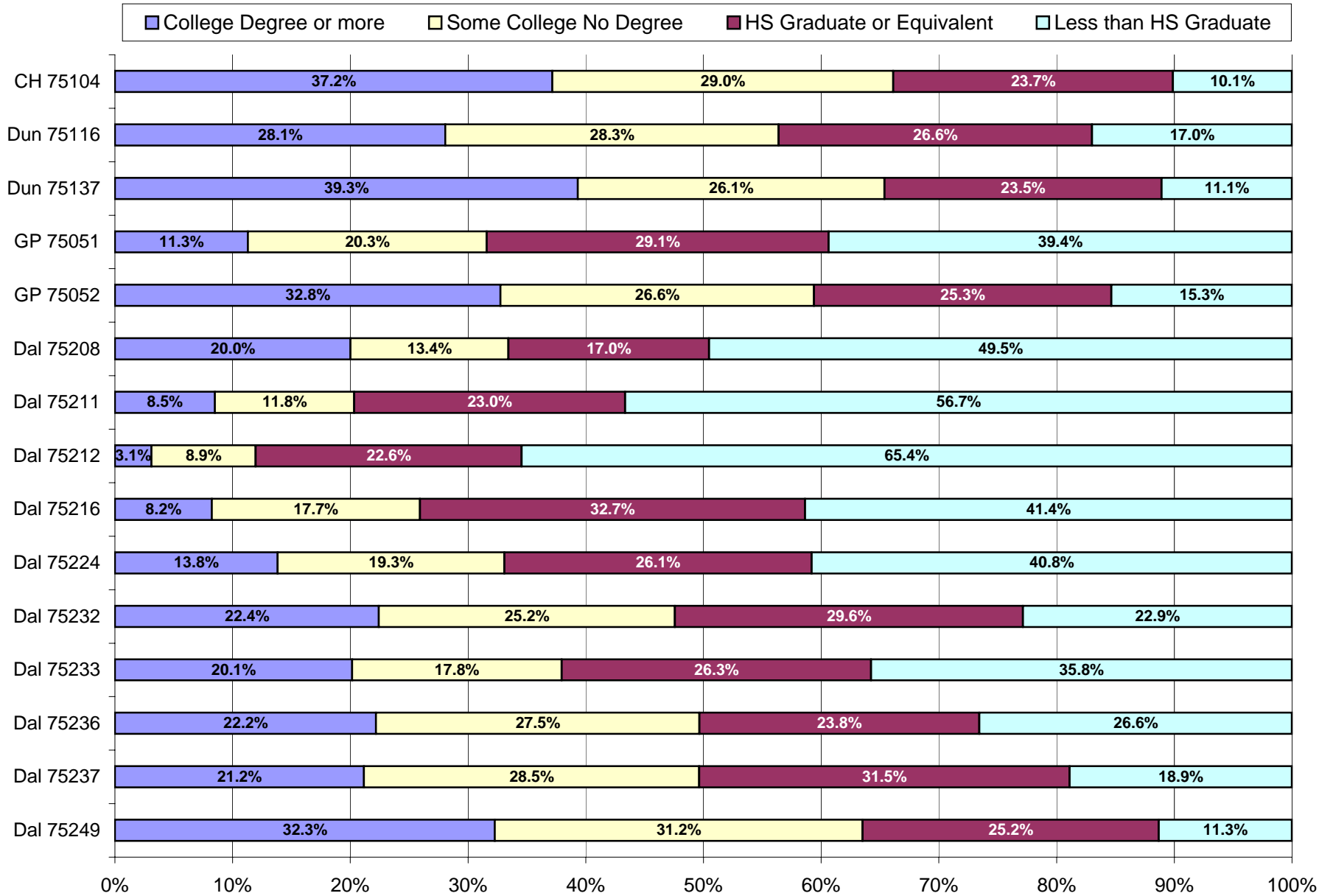
White
 Black
 Hispanic
 Other



*Source: Microsoft MapPoint 2004 and City web sites. Ethnicity percentage estimates for CH, GP, and Dun Zips based on multi-factored prorated adjustments to source estimates.

Mountain View College Service Area Population Estimate* 2004

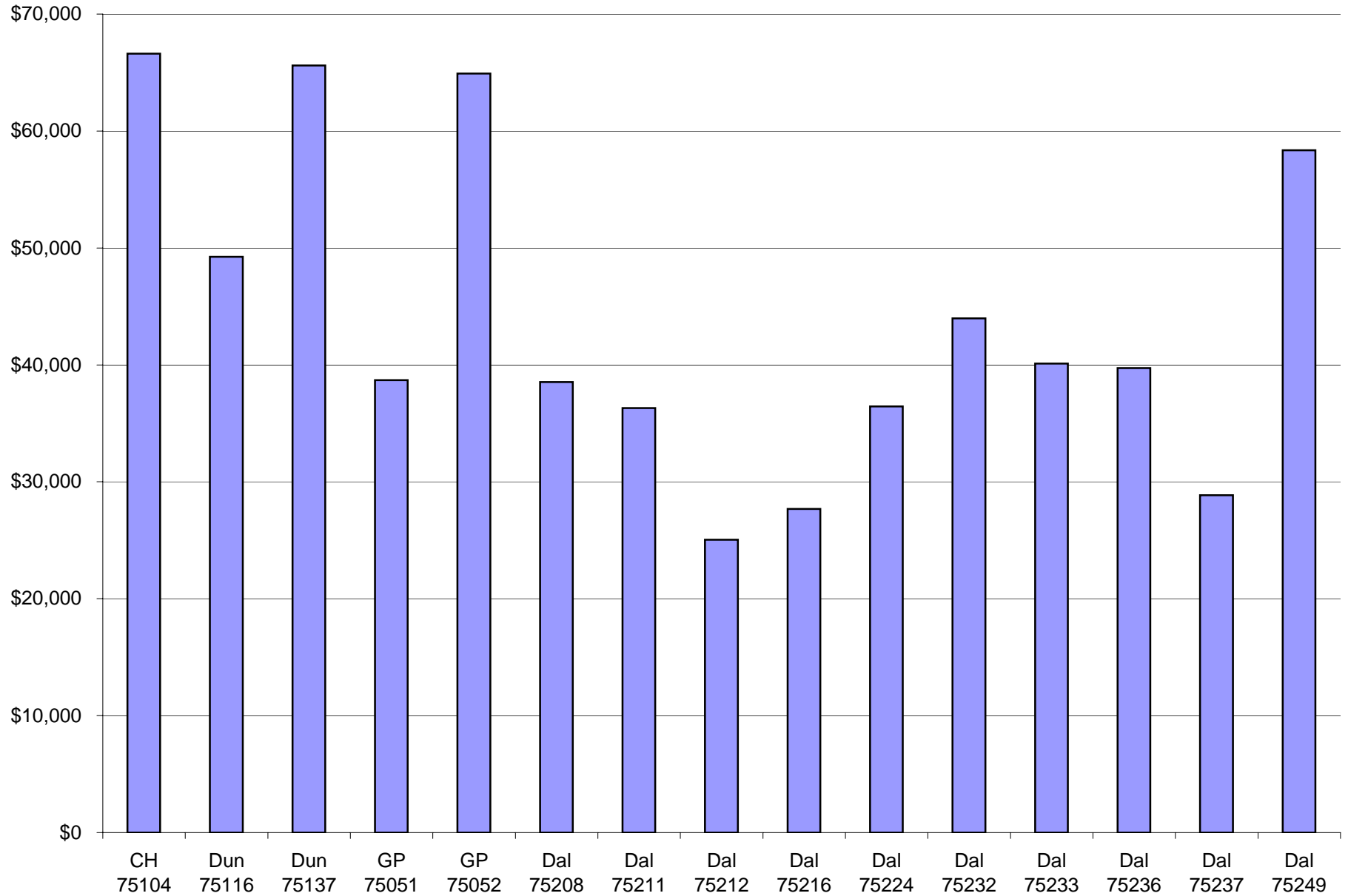
Percentage Educational Attainment by Zip Code



*Source: Microsoft MapPoint 2004

Mountain View College Service Area Population Estimate* 2004

Household Median Income By Zip Code



*Source: Microsoft MapPoint 2004

MVC Service Area Profile Population Estimate* 2004

City	Zip Code	Total Population	AGE							GENDER	
			0-17	18 - 24	25-34	35 -44	45-54	55-64	65 +	Female	Male
Cedar Hill	75104	42,279	26.5%	7.7%	27.1%	16.0%	12.6%	6.1%	3.9%	52.3%	47.7%
Duncanville	75116	21,078	24.1%	8.4%	23.1%	11.9%	12.7%	9.8%	10.0%	52.9%	47.1%
	75137	20,471	23.0%	8.4%	22.7%	13.2%	15.3%	10.0%	7.4%	52.6%	47.4%
Grand Prairie	75051	34,223	28.8%	8.5%	25.7%	12.5%	9.5%	7.0%	7.9%	51.3%	48.7%
	75052	74,595	26.3%	7.8%	28.0%	15.7%	12.3%	6.3%	3.5%	50.8%	49.2%
Dallas	75208	42,566	26.2%	9.5%	28.5%	13.5%	10.5%	5.4%	6.3%	47.4%	52.6%
	75211	82,026	30.3%	10.7%	27.6%	12.3%	8.7%	5.0%	5.5%	48.7%	51.3%
	75212	24,606	32.9%	10.8%	23.5%	11.2%	8.6%	5.4%	7.6%	50.5%	49.5%
	75216	55,538	25.0%	9.3%	22.7%	11.6%	10.5%	9.2%	11.8%	52.9%	47.1%
	75224	38,345	29.4%	11.3%	25.9%	11.9%	9.6%	5.8%	6.1%	50.6%	49.4%
	75232	31,958	24.5%	9.5%	22.6%	11.3%	13.4%	10.4%	8.4%	53.5%	46.5%
	75233	15,879	27.1%	11.1%	26.3%	11.0%	9.6%	6.2%	8.7%	50.3%	49.7%
	75236	8,711	26.4%	15.5%	25.2%	12.6%	10.6%	5.2%	4.5%	52.7%	47.3%
	75237	18,262	29.6%	9.9%	32.4%	13.0%	9.2%	3.8%	2.1%	56.0%	44.0%
75249	11,175	27.3%	9.1%	26.0%	14.3%	13.3%	6.8%	3.2%	52.5%	47.5%	
Service Area	Total:	521,712	27.3%	9.5%	26.1%	13.0%	10.9%	6.7%	6.5%	51.1%	48.9%

* Source: Microsoft MapPoint 2004 and City web sites. Ethnicity percentage estimates for CH, GP, and Dun Zips based on multi-factored prorated adjustments to source estimates.

MVC Service Area Profile Population Estimate* 2004

City	Zip Code	Total Population	Total Population Age 25+ Years	EDUCATIONAL ATTAINMENT 25 Years and older				ETHNICITY			
				College Degree or more	Some College No Degree	High School Graduate or Equivalent	Less than High School Graduate	White	Black	Hispanic	Other
Cedar Hill	75104	42,279	27,788	37.2%	29.0%	23.7%	10.1%	50.0%	33.8%	12.4%	3.9%
Duncanville	75116	21,078	14,226	28.1%	28.3%	26.6%	17.0%	49.3%	22.0%	24.0%	4.7%
	75137	20,471	14,043	39.3%	26.1%	23.5%	11.1%	47.8%	31.9%	15.0%	5.3%
Grand Prairie	75051	34,223	21,434	11.3%	20.3%	29.1%	39.4%	29.8%	11.5%	55.1%	3.6%
	75052	74,595	49,123	32.8%	26.6%	25.3%	15.3%	40.2%	20.0%	29.8%	10.0%
Dallas	75208	42,566	27,345	20.0%	13.4%	17.0%	49.5%	17.5%	3.8%	77.2%	1.4%
	75211	82,026	48,410	8.5%	11.8%	23.0%	56.7%	8.8%	5.8%	83.9%	1.5%
	75212	24,606	13,843	3.1%	8.9%	22.6%	65.4%	2.3%	29.8%	66.6%	1.4%
	75216	55,538	36,507	8.2%	17.7%	32.7%	41.4%	2.0%	69.6%	27.4%	1.0%
	75224	38,345	22,740	13.8%	19.3%	26.1%	40.8%	12.0%	28.8%	57.2%	2.0%
	75232	31,958	21,104	22.4%	25.2%	29.6%	22.9%	7.4%	73.5%	18.1%	1.0%
	75233	15,879	9,818	20.1%	17.8%	26.3%	35.8%	9.3%	36.3%	53.1%	1.2%
	75236	8,711	5,059	22.2%	27.5%	23.8%	26.6%	28.9%	38.6%	24.0%	8.5%
	75237	18,262	11,045	21.2%	28.5%	31.5%	18.9%	2.7%	83.2%	13.0%	1.1%
75249	11,175	7,100	32.3%	31.2%	25.2%	11.3%	19.9%	56.5%	19.9%	3.7%	
Service Area	Total:	521,712	329,585	20.3%	20.8%	25.6%	33.3%	21.4%	31.0%	44.2%	3.4%

* Source: Microsoft MapPoint 2004 and City web sites. Ethnicity percentage estimates for CH, GP, and Dun Zips based on multi-factored prorated adjustments to source estimates.

MVC Service Area Profile Population Estimate* 2004

City	Zip Code	Total Population	Total Households	HOUSEHOLD INCOME							Median Household Income	Average Household Income
				Under \$35,000	\$35,000 +	\$50,000+	\$75,000+	\$100,000+	\$150,000+			
Cedar Hill	75104	42,279	11,917	17.8%	82.2%	66.9%	41.5%	22.6%	5.7%	\$66,617	\$76,640	
Duncanville	75116	21,078	6,677	30.9%	69.1%	49.0%	26.9%	14.1%	3.7%	\$49,242	\$60,862	
	75137	20,471	6,344	20.9%	79.1%	63.7%	41.7%	24.8%	7.5%	\$65,603	\$78,942	
Grand Prairie	75051	34,223	9,555	45.6%	54.4%	36.5%	17.1%	7.8%	1.5%	\$38,691	\$46,648	
	75052	74,595	20,754	20.1%	79.9%	64.9%	40.0%	21.1%	5.4%	\$64,924	\$73,362	
Dallas	75208	42,566	11,135	46.0%	54.0%	37.1%	21.9%	12.6%	5.3%	\$38,530	\$54,530	
	75211	82,026	19,381	48.3%	51.7%	32.2%	14.1%	6.3%	1.7%	\$36,307	\$44,716	
	75212	24,606	5,812	64.4%	35.6%	20.6%	8.2%	3.7%	1.3%	\$25,053	\$33,067	
	75216	55,538	16,304	61.1%	38.9%	23.0%	9.0%	4.1%	1.3%	\$27,676	\$36,274	
	75224	38,345	9,969	48.1%	51.9%	32.2%	14.8%	7.1%	1.9%	\$36,441	\$45,030	
	75232	31,958	9,751	40.2%	59.8%	43.5%	23.5%	11.5%	3.0%	\$43,981	\$54,576	
	75233	15,879	4,338	44.4%	55.6%	39.1%	17.8%	9.2%	3.2%	\$40,115	\$49,680	
	75236	8,711	2,402	43.4%	56.6%	35.6%	17.1%	8.3%	1.2%	\$39,728	\$47,969	
	75237	18,262	6,819	63.8%	36.2%	17.3%	4.7%	1.7%	0.6%	\$28,850	\$33,192	
	75249	11,175	3,013	21.2%	78.8%	59.4%	31.3%	15.4%	2.0%	\$58,353	\$63,823	
Service Area	Total:	521,712	144,171	40.9%	59.1%	42.0%	22.6%	11.7%	3.2%	\$44,528	\$53,940	

* Source: Microsoft MapPoint 2004 and City web sites. Ethnicity percentage estimates for CH, GP, and Dun Zips based on multi-factored prorated adjustments to source estimates.

MVC Service Area Profile 2000 US Census

City	Zip Code	Total Population	AGE							GENDER	
			0-17	18 - 24	25-34	35 -44	45-54	55-64	65 +	Female	Male
Cedar Hill	75104	32,113	32.2%	7.5%	15.1%	21.6%	13.4%	5.9%	4.2%	52.3%	47.7%
Duncanville	75116	18,215	28.1%	8.5%	13.0%	15.9%	13.2%	10.0%	11.3%	53.0%	47.0%
	75137	17,779	28.4%	8.0%	11.8%	16.6%	17.7%	9.2%	8.4%	53.3%	46.7%
Grand Prairie	75051	31,257	32.8%	10.3%	17.1%	13.8%	10.6%	6.8%	8.7%	51.5%	48.5%
	75052	56,225	31.7%	8.5%	15.6%	21.0%	13.6%	5.9%	3.8%	51.3%	48.7%
Dallas	75208	35,800	30.3%	12.9%	16.8%	16.1%	11.2%	5.3%	7.5%	47.1%	52.9%
	75211	68,730	34.3%	14.5%	16.5%	14.0%	9.4%	5.1%	6.3%	49.0%	51.0%
	75212	22,239	37.8%	11.7%	13.8%	13.8%	8.8%	5.5%	8.6%	51.2%	48.8%
	75216	49,440	29.5%	9.7%	12.5%	13.3%	11.8%	10.2%	12.9%	52.8%	47.2%
	75224	32,553	33.3%	13.4%	15.2%	14.1%	11.3%	5.2%	7.6%	51.2%	48.8%
	75232	28,773	29.0%	9.8%	12.6%	13.5%	15.7%	10.1%	9.2%	54.0%	46.0%
	75233	13,760	31.1%	14.2%	16.1%	12.6%	11.4%	5.8%	8.9%	49.9%	50.1%
	75236	10,113	32.4%	9.4%	20.5%	16.4%	10.5%	5.5%	5.3%	53.2%	46.8%
	75237	12,697	32.5%	15.1%	21.9%	15.3%	9.8%	3.8%	1.6%	56.2%	43.8%
75249	9,161	34.3%	8.4%	14.8%	18.1%	15.4%	5.9%	3.1%	53.2%	46.8%	
Service Area	Total:	438,855	31.9%	11.0%	15.3%	15.8%	12.0%	6.7%	7.4%	51.4%	48.6%

MVC Service Area Profile 2000 US Census

City	Zip Code	Total Population	Total Population Age 25+ Years	EDUCATIONAL ATTAINMENT 25 Years and older				ETHNICITY			
				College Degree or more	Some College No Degree	High School Graduate or Equivalent	Less than High School Graduate	White	Black	Hispanic	Other
Cedar Hill	75104	32,113	19,357	37.4%	28.8%	23.6%	10.2%	51.0%	33.8%	11.4%	3.8%
Duncanville	75116	18,215	11,559	28.0%	28.1%	26.4%	17.4%	56.6%	20.4%	18.4%	4.6%
	75137	17,779	11,310	40.4%	25.5%	23.3%	10.8%	54.9%	29.3%	10.9%	4.9%
Grand Prairie	75051	31,257	17,812	11.1%	20.0%	29.4%	39.5%	37.6%	12.5%	46.4%	3.5%
	75052	56,225	33,632	33.6%	26.8%	25.0%	14.6%	50.7%	17.4%	22.1%	9.7%
Dallas	75208	35,800	20,340	21.3%	13.5%	17.0%	48.2%	22.5%	4.2%	71.6%	1.7%
	75211	68,730	35,204	8.6%	11.6%	22.9%	56.9%	13.7%	7.6%	76.9%	1.8%
	75212	22,239	11,223	3.4%	8.7%	22.3%	65.7%	2.0%	35.2%	61.9%	0.8%
	75216	49,440	30,042	8.5%	17.6%	32.9%	41.0%	2.1%	77.3%	19.3%	1.3%
	75224	32,553	17,352	14.1%	19.1%	26.0%	40.8%	14.8%	34.0%	49.1%	2.1%
	75232	28,773	17,601	22.9%	25.2%	29.1%	22.8%	9.1%	76.1%	13.7%	1.0%
	75233	13,760	7,529	21.6%	18.3%	26.1%	34.1%	13.5%	39.3%	45.6%	1.7%
	75236	10,113	5,886	21.2%	27.9%	23.9%	27.0%	24.1%	49.6%	20.6%	5.8%
	75237	12,697	6,648	22.1%	28.3%	33.0%	16.6%	3.6%	88.5%	7.3%	0.7%
75249	9,161	5,242	32.5%	31.0%	25.0%	11.4%	27.6%	50.5%	17.2%	4.6%	
Service Area	Total:	438,855	250,737	20.4%	20.6%	25.7%	33.3%	25.2%	33.2%	38.4%	3.3%

MVC Service Area Profile 2000 US Census

City	Zip Code	Total Population	Total Households	HOUSEHOLD INCOME							Median Household Income	Average Household Income
				Under \$35,000	\$35,000 +	\$50,000+	\$75,000+	\$100,000+	\$150,000+			
Cedar Hill	75104	32,113	10,730	21.4%	78.6%	61.6%	34.5%	16.2%	4.6%	\$60,140	\$69,187	
Duncanville	75116	18,215	6,604	35.2%	64.8%	44.8%	22.3%	11.0%	3.1%	\$45,314	\$56,426	
	75137	17,779	6,268	24.3%	75.7%	60.6%	37.4%	19.7%	6.3%	\$59,459	\$71,376	
Grand Prairie	75051	31,257	10,197	51.2%	48.8%	30.5%	12.7%	5.2%	1.0%	\$34,208	\$41,037	
	75052	56,225	18,550	21.4%	78.6%	61.3%	33.7%	14.8%	3.8%	\$60,254	\$66,421	
Dallas	75208	35,800	11,112	49.8%	50.2%	33.9%	18.8%	9.9%	4.4%	\$35,135	\$50,889	
	75211	68,730	18,839	52.9%	47.1%	27.8%	11.1%	4.4%	1.5%	\$32,702	\$41,233	
	75212	22,239	5,914	68.9%	31.1%	16.8%	6.0%	2.5%	1.0%	\$22,555	\$31,330	
	75216	49,440	16,492	65.4%	34.6%	19.8%	7.1%	3.1%	1.3%	\$24,960	\$35,082	
	75224	32,553	9,724	52.2%	47.8%	28.5%	12.1%	5.6%	1.4%	\$33,515	\$40,886	
	75232	28,773	9,873	43.6%	56.4%	39.6%	19.4%	8.0%	2.6%	\$39,824	\$50,308	
	75233	13,760	4,198	46.3%	53.7%	37.9%	14.2%	7.8%	3.0%	\$36,869	\$47,741	
	75236	10,113	3,767	52.7%	47.3%	29.0%	11.2%	5.7%	1.6%	\$32,957	\$41,180	
	75237	12,697	5,675	68.4%	31.6%	13.8%	3.6%	0.9%	0.1%	\$26,270	\$29,804	
	75249	9,161	2,872	25.3%	74.7%	53.4%	24.4%	10.8%	0.3%	\$51,949	\$56,546	
Service Area	Total:	438,855	140,815	45.2%	54.8%	37.5%	18.3%	8.4%	2.5%	\$39,993	\$49,004	

**MVC Service Area Profile
1990 US Census**

City	Zip Code	Total Population	AGE							GENDER	
			0-17	18 - 24	25-34	35 -44	45-54	55-64	65 +	Female	Male
Cedar Hill	75104	19,540	33.3%	7.6%	24.5%	18.3%	8.0%	4.0%	4.4%	50.9%	49.1%
Duncanville	75116	18,002	29.1%	8.9%	15.3%	16.9%	12.8%	8.9%	8.1%	51.4%	48.6%
	75137	17,033	30.5%	8.4%	15.4%	20.6%	13.4%	6.3%	5.3%	51.2%	48.8%
Grand Prairie	75051	46,398	31.1%	10.2%	19.0%	17.5%	9.7%	6.1%	6.3%	50.6%	49.4%
	75052	9,450	35.2%	7.7%	21.4%	22.2%	7.4%	3.7%	2.3%	49.4%	50.6%
Dallas	75208	33,587	29.5%	12.1%	20.6%	14.5%	6.7%	5.8%	10.8%	47.5%	52.5%
	75211	54,673	33.8%	11.0%	19.0%	13.3%	7.2%	5.7%	10.0%	51.0%	49.0%
	75212	23,569	38.6%	12.0%	15.5%	10.7%	7.9%	7.3%	8.0%	50.3%	49.7%
	75216	54,904	30.5%	11.0%	15.9%	12.0%	11.8%	9.6%	9.4%	52.5%	47.5%
	75224	26,662	31.2%	10.7%	17.7%	15.1%	8.5%	6.1%	10.6%	52.4%	47.6%
	75232	28,216	29.9%	11.3%	13.3%	17.6%	11.7%	7.6%	8.6%	52.8%	47.2%
	75233	11,179	32.9%	8.8%	15.9%	14.4%	8.4%	7.2%	12.3%	52.3%	47.7%
	75236	6,162	26.5%	18.3%	20.4%	15.4%	8.5%	3.9%	7.0%	52.3%	47.7%
	75237	12,830	25.4%	18.9%	30.8%	14.5%	6.7%	2.6%	1.2%	55.3%	44.7%
	75249	8,670	36.8%	7.3%	19.2%	20.8%	10.8%	3.0%	2.0%	51.3%	48.7%
Service Area	Total:	370,875	31.7%	10.8%	18.3%	15.3%	9.4%	6.5%	8.1%	51.2%	48.8%

**MVC Service Area Profile
1990 US Census**

City	Zip Code	Total Population	Total Population Age 25+ Years	EDUCATIONAL ATTAINMENT 25 Years and older				ETHNICITY			
				College Degree or more	Some College No Degree	High School Graduate or Equivalent	Less than High School Graduate	White	Black	Hispanic	Other
Cedar Hill	75104	19,540	11,564	34.4%	28.3%	23.2%	14.1%	76.2%	14.1%	7.7%	2.0%
Duncanville	75116	18,002	11,157	26.9%	27.6%	29.2%	16.3%	81.5%	9.0%	7.9%	1.5%
	75137	17,033	10,407	44.0%	24.8%	21.3%	9.9%	78.9%	12.7%	5.5%	2.8%
Grand Prairie	75051	46,398	27,236	19.3%	23.7%	30.9%	26.1%	64.3%	9.9%	22.2%	3.6%
	75052	9,450	5,387	32.6%	26.9%	28.3%	12.2%	79.5%	8.3%	9.4%	2.8%
Dallas	75208	33,587	19,614	19.1%	13.6%	20.5%	46.8%	35.5%	9.1%	53.4%	1.9%
	75211	54,673	30,192	9.4%	13.9%	25.4%	51.4%	29.9%	11.9%	55.5%	2.6%
	75212	23,569	11,637	1.7%	4.9%	17.7%	75.6%	2.2%	43.4%	52.9%	1.5%
	75216	54,904	32,164	8.0%	15.0%	33.0%	44.0%	2.9%	88.2%	8.7%	0.2%
	75224	26,662	15,491	17.4%	20.3%	28.3%	34.0%	29.5%	47.0%	22.5%	0.9%
	75232	28,216	16,576	25.1%	23.8%	29.7%	21.4%	17.4%	76.0%	6.2%	0.3%
	75233	11,179	6,507	25.3%	22.8%	27.2%	24.7%	29.2%	57.6%	12.4%	0.8%
	75236	6,162	3,400	29.6%	23.7%	23.6%	23.2%	50.2%	32.1%	11.2%	6.5%
	75237	12,830	7,154	33.4%	30.9%	25.6%	10.1%	14.0%	81.0%	4.4%	0.6%
75249	8,670	4,847	40.0%	31.0%	21.4%	7.7%	55.2%	31.5%	9.6%	3.6%	
Service Area	Total:	370,875	213,333	19.6%	19.8%	26.8%	33.9%	36.8%	36.6%	24.8%	1.8%

**MVC Service Area Profile
1990 US Census**

City	Zip Code	Total Population	Total Households	HOUSEHOLD INCOME							Median Household Income	Average Household Income
				Under \$35,000	\$35,000 +	\$50,000+	\$75,000+	\$100,000+	\$150,000+			
Cedar Hill	75104	19,540	6,447	39.4%	60.6%	37.1%	10.2%	4.0%	1.1%	\$41,305	\$45,533	
Duncanville	75116	18,002	6,320	45.9%	54.1%	32.1%	8.9%	2.0%	0.6%	\$37,287	\$42,312	
	75137	17,033	5,687	33.0%	67.0%	46.8%	24.1%	9.9%	3.4%	\$47,870	\$57,929	
Grand Prairie	75051	46,398	15,252	52.4%	47.6%	23.4%	5.6%	1.6%	0.5%	\$33,495	\$36,473	
	75052	9,450	2,837	25.1%	74.9%	47.4%	13.8%	2.2%	0.8%	\$48,775	\$51,475	
Dallas	75208	33,587	10,692	70.1%	29.9%	17.6%	6.7%	4.2%	1.4%	\$22,739	\$32,737	
	75211	54,673	17,216	72.2%	27.8%	10.2%	2.1%	0.6%	0.2%	\$23,449	\$27,238	
	75212	23,569	6,177	87.6%	12.4%	5.0%	1.1%	0.5%	0.4%	\$12,432	\$20,076	
	75216	54,904	16,781	78.1%	21.9%	9.2%	1.6%	0.5%	0.1%	\$18,877	\$23,901	
	75224	26,662	8,969	68.2%	31.8%	15.3%	3.9%	1.1%	0.1%	\$25,761	\$29,588	
	75232	28,216	9,331	55.3%	44.7%	23.7%	8.0%	2.9%	0.7%	\$31,644	\$37,229	
	75233	11,179	3,810	59.4%	40.6%	21.9%	7.6%	2.7%	0.3%	\$29,761	\$34,451	
	75236	6,162	2,279	65.3%	34.7%	16.4%	4.5%	1.1%	0.3%	\$27,448	\$31,036	
	75237	12,830	6,241	79.5%	20.5%	7.4%	1.3%	0.2%	0.0%	\$22,805	\$25,446	
	75249	8,670	2,580	30.0%	70.0%	36.6%	7.7%	3.1%	0.9%	\$41,949	\$46,398	
Service Area	Total:	370,875	120,619	62.4%	37.6%	19.6%	5.8%	2.1%	0.6%	\$28,326	\$33,411	

City of Dallas Color-Coded Maps Removed to reduce file size. Access maps page via separate link made available beneath the main report link.